



BASE MATERIALS

- Concrete
- Concrete block
- Solid brick
- Steel

APPROVALS AND CERTIFICATES



BENEFITS

- Multidiameter.
- Adaptable to different fixing bases such as TBB, TBBD, BBT, TB, etc.
- Compatible with E2000PG and PVC channels.
- Temperature range from -40°C to +85 °C continuously.
- Black color is UV resistant.
- Made of polyamide 6.6 V2 UL 94.
- RoHs
- Free of halogens.
- Free of silicones.
- Two colors available: natural and black RAL 9001
- Installation temperature from -10°C to +45°C.

INSTALLATION PROCEDURE

Insert the tip of the cable tie, tighten it manually (or with a tool) until the cables are completely fixed (or the product you are trying to knot), then cut the excess from the flange with a tool.

BREAKING LOADS

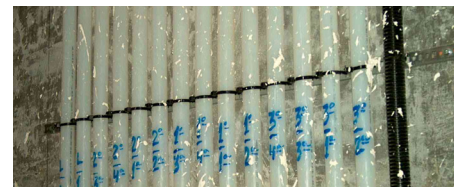
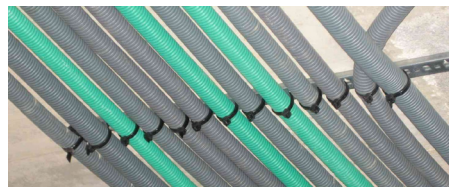
Width (mm)	Maximum recommended load (Kg)
2,5	8
3,6	18
4,8	22
7,6	55
8,8	80
9,0	80
12,6	110

STORAGE

- It is recommended to store the cable tie in place with a temperature around 23°C and a relative humidity of 50%.
- Once the packaging is opened, it must be finished as soon as possible.
- Always close the bag after using the cable ties to maintain the correct humidity (our standard bag ensures that the water content in the product is constant).
- Do not store or expose the product directly to sunlight.
- Keep the product away from any heat source as they can affect the mechanical properties of the cable ties.

APPLICATIONS

For fixing plastic pipes for electrical and heating installations.



MAIN DIMENSIONS

Width [mm]	Length [mm]	Subjection range [mm]
2,5	100	20,5
2,5	150	39,8
2,5	200	52,5
3,6	140	33
3,6	200	52,5
3,6	300	84
3,6	370	106
4,8	200	49,5
4,8	250	65
4,8	300	81
4,8	370	103,5
4,8	430	122,5
7,6	150	35
7,6	200	50,9
7,6	300	82,8
7,6	365	105
7,6	450	130,5
7,6	550	159
7,6	750	226
8,8	760	229,5
9,0	810	245
12,6	530	156
12,6	1030	315