

BaseBox

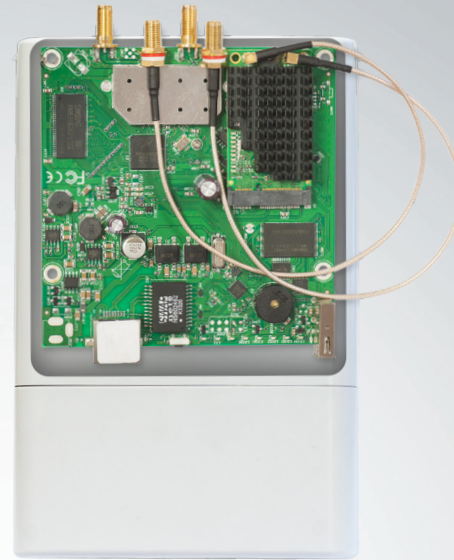
The BaseBox in an outdoor wireless device, based on our popular RB912 model, fitted with two SMA connectors for antennas, and a cable hood for protection against moisture. Also available are three additional places for antenna connectors, in case you wish to use the BaseBox miniPCle slot for one more wireless interface to make a dual band device, or a 3G/4G modem.

The case can be opened with one hand, and is protected against the elements. USB, Ethernet and a Grounding wire exits are provided on the bottom, behind a protective door. Two models are available - BaseBox 2 and BaseBox 5 (2 or 5GHz wireless, respectively).

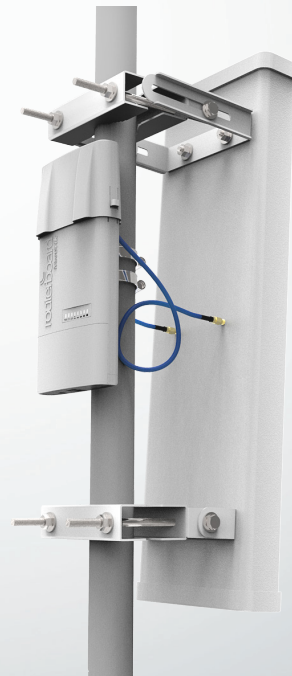
Comes with a mounting loop for tower/pole mounting, and a separate DIN rail mount is also provided. Package also includes a PoE injector and power supply unit.

Model	BaseBox 5	BaseBox 2
Order code	RB912UAG-5HPnD-OUT	RB912UAG-2HPnD-OUT
Features	1 Ethernet, 1 miniPCle, USB, Additional memory, Gigabit, High power, Dual chain, Outdoor case	
CPU	Atheros AR9342 600MHz network processor	
Memory	64MB DDR onboard memory	
Ethernet	One Gigabit port with Auto-MDIX	
Wireless	Built in 5GHz 802.11a/n, 2x RP-SMA connectors	Built in 2GHz 802.11b/g/n, 2x RP-SMA connectors
Wireless regulations	Specific frequency range may be limited by country regulations	
Connector type	RP-SMA Female (outside thread)	
Extras	beeper, signal and status LEDs, SIM slot (requires 3g miniPCle card), voltage and temperature sensors	
Expansion	miniPCle slot for 802.11 or 3G (using 3G disables the USB port), USB 2.0 port	
Power options	PoE: 8-30V DC on Ether1 (Non 802.3af). Consumption: 14W at 24V	
Dimensions	246x135x50mm; Weight: 390g	
Operating temp.	-40C to +70C	
OS	MikroTik RouterOS, Level4 license (supports wireless AP mode)	
Kit includes	RB912 outdoor unit, PSU, PoE injector, mounting loop, DIN rail mount, mounting ring	

	RB912UAG-5HPnD-OUT	RB912UAG-2HPnD-OUT
TX/RX at MCS0	30dBm / -96dBm	30dBm / -96dBm
TX/RX at MCS7	24dBm / -78dBm	24dBm / -78dBm
TX/RX at 6Mbit	30dBm / -96dBm	30dBm / -96dBm
TX/RX at 54Mbit	27dBm / -80dBm	27dBm / -80dBm
Frequency range	4900-5920MHz	2400MHz-2500MHz



Rendered image shows internals of BaseBox with optional second wireless card



Using the optionally available Flexguide cable, you can use the Basebox with any 3rd party antenna



24V 0.8A Adapter

Metal ring

Gigabit PoE injector

DIN mount