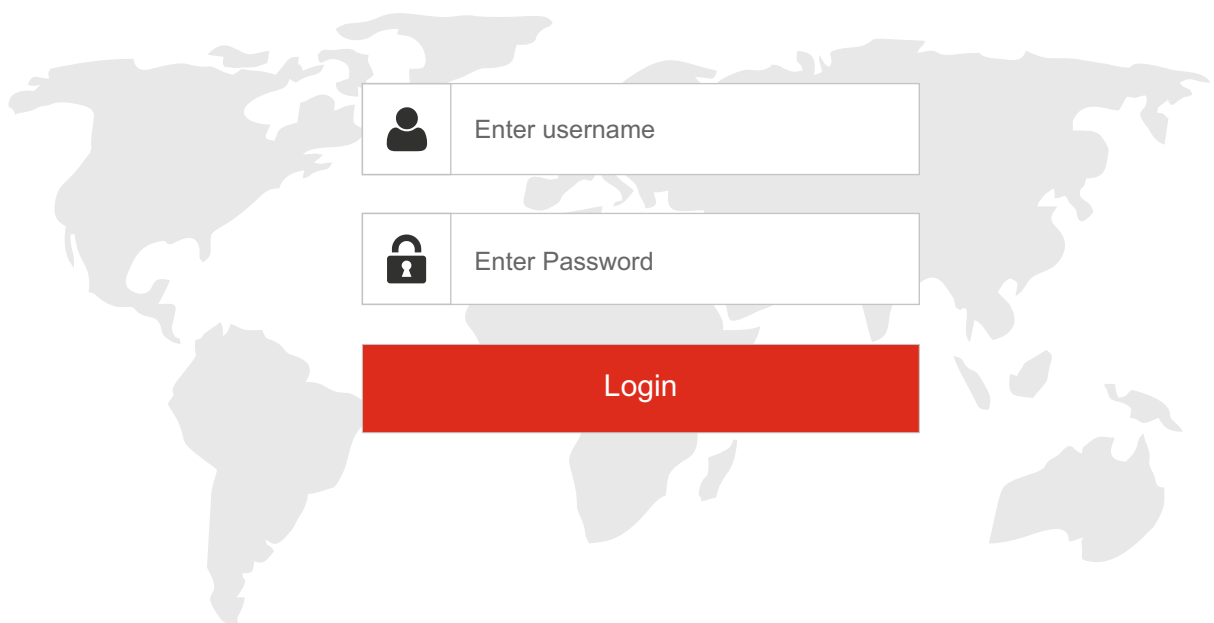


prezentare interfață

înregistratoare video
seria VT de la ASYTECH



Interfața înregistratoarelor video digitale, seria VT de la ASYTECH



Accesare prin Internet Explorer

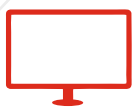
The screenshots show the ASYTECH web interface accessed via Internet Explorer. The interface includes a navigation menu with options like Live Display, Playback, Backup, and Function Panel. The Function Panel contains several modules: Camera (Edit Camera, Image Settings, Motion, PTZ), Record (Encode Parameters, Record Schedule, Record Settings), Alarm (Alarm-out, Exception, Alarm Status), Disk (Storage Mode, Disk), Network (ICMP/994, ICMP/995, Port, Email, NDI, Network Status), Account and Authority (Add User, Edit User, Edit Permission Group, Black and white List), and System (Basic, Date and Time, Information, View Log, Backup and Restore). The main display area shows a grid of live camera feeds from various angles of a store interior. A playback window is also visible, showing a timeline of recorded events with a search and play function.



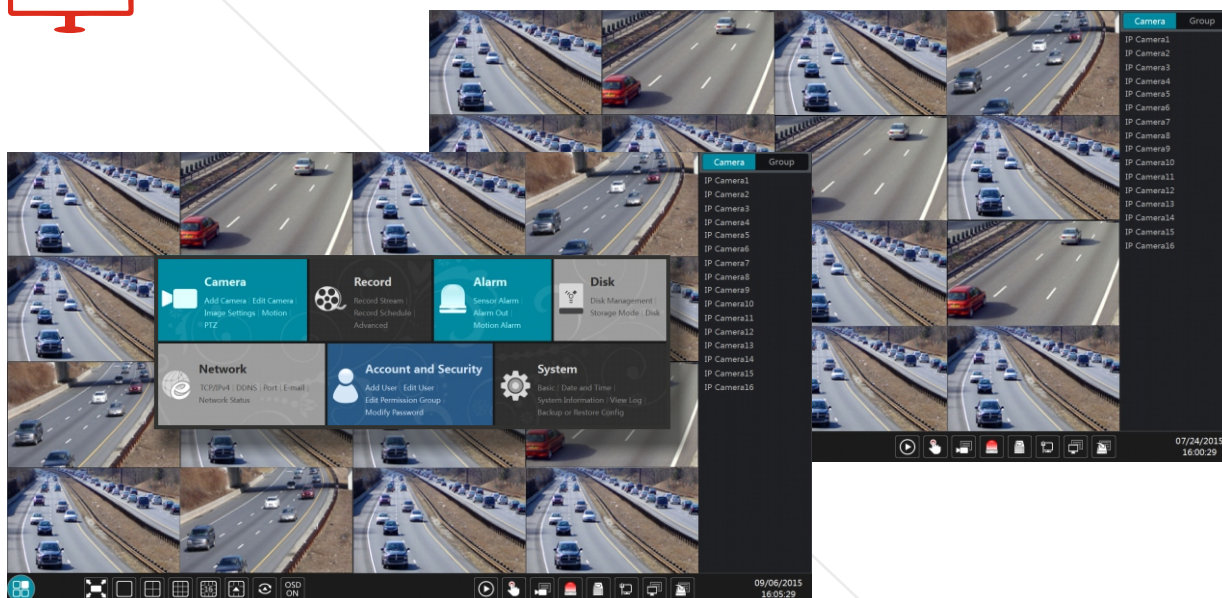
Accesare prin telefon mobil sau tabletă

The screenshots show the ASYTECH mobile application interface on a smartphone. The app displays a grid of live camera feeds, similar to the web interface. It includes a 'Live' status indicator, a 'SUPERLIVE PLUS' logo, and options for 'Setari remote' and 'Setari locale'. A 'Lista server' section shows server addresses like 'ND787018F8F2' and 'Fisier'. The bottom navigation bar includes icons for camera, home, grid, and volume. A 'Vizualizare la distanta' (Remote View) screen shows a single camera feed with a playback timeline for the date '2017-02-13 15:47:01'. The app also features a 'Feedback' section with the name 'Despre'.

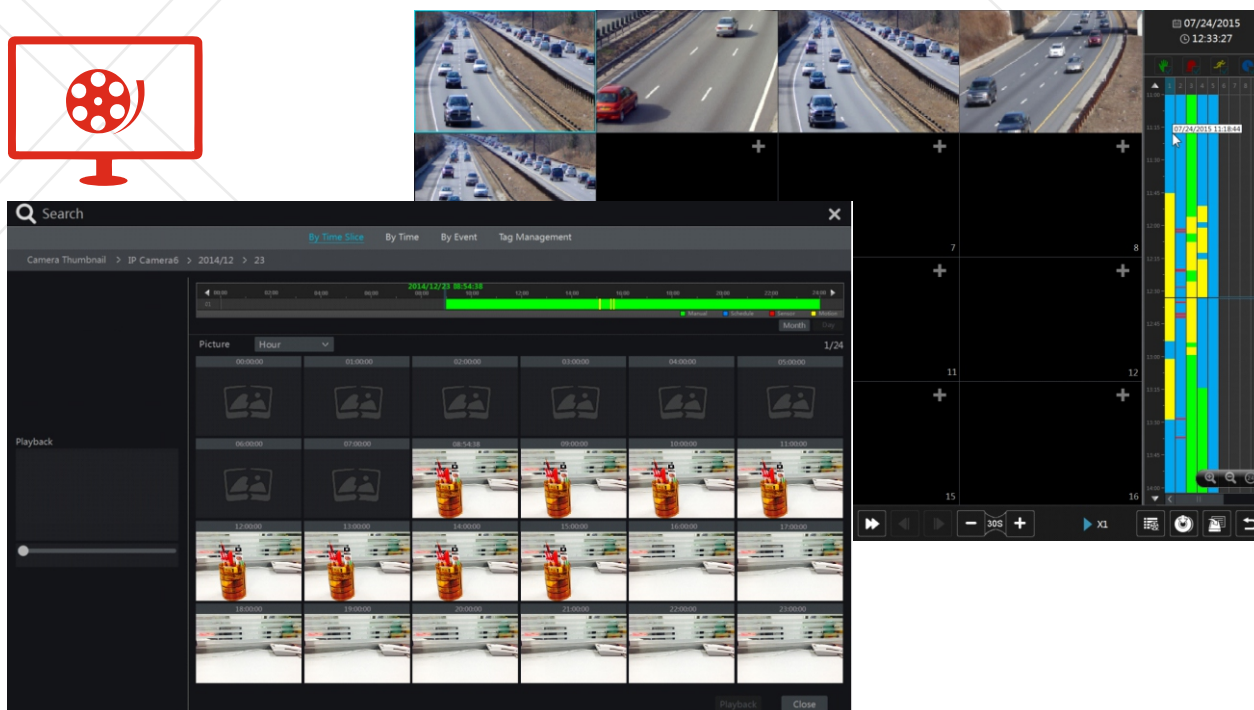
Interfața înregistratoarelor video digitale, seria VT de la ASYTECH



Accesare directă - interfață înregistrator



Interfață redare înregistrări - Playback inteligent



redare capturi de imagine (snapshot) pe luna / zi / oră / minute
găsești ceea ce vrei simplu și rapid






Panou și funcții

noul design modular

- interfață intuitivă
- fiabilitate ridicată
- ușor de accesat
- ușor de învățat și operat
- procesare avansată

MENIU modular

 Camera Add Camera Edit Camera Image Settings Motion PTZ	 Record Record Stream Record Schedule Advanced	 Alarm Senzor Alarm Alarm Out Motion Alarm	 Disk Disk Management Storage Mode Disk
 Network TCP/IPV4 DDNS Port Email Network Status	 Account and Security Add Camera Edit Camera Image Settings Motion PTZ	 System Basic Date and Time System Information View Log Backup or Restore Config	

- Configurare rapidă de la prima pornire
- Posibilitate de recuperare parolă prin atribuirea unor întrebări și răspunsuri
- Conexiune P2P de pe MOBIL și PC (nu necesită IP real sau configurări suplimentare în router)

Distribuitor autorizat